

ELSHERE HEREFORDS

Established 2012

ANNUAL BULL SALE

MON. **JAN. 14, 2019**
12 NOON • FAITH (SD) LIVESTOCK



LOT 701
Sire: Churchill
Sensation 028X

ELSHERE HEREFORDS

Established 2012

ANNUAL BULL SALE

MON. JAN. 14, 2019
12 NOON • FAITH (SD) LIVESTOCK

DELIVERY

Free delivery within western South Dakota.

SEMEN TESTING

*Semen testing and trich testing
completed on September 19, 2018.*

GUARANTEE

First breeding season guarantee.

WEIGHTS

*Birth weight, weaning weight and yearling
weight are actual measured weights. Birth
weights are measured using a hanging scale.*

EPDs

Catalog EPDs are current as of Dec. 1, 2018

SALE REPRESENTATIVES

*Cole Elshere 605/ 200-1329
Andy Elshere 605/ 788-2812*

CATTLE USA.com LIVE CATTLE AUCTIONS

**Potential buyers may also view auction and bid online at...
www.cattleusa.com**

If you plan to bid online, YOU MUST pre-register with Cattle USA two (2) days prior to Elshere sale ...pre-register by Jan. 12, 2019.

- 1) Log in to www.CattleUSA.com**
- 2) Push the Submit button next to Faith Livestock.** The first time you do this, a form will pop-up for you to fill out your contact information. *Fill out your information, then push the button at the bottom of the form to continue.*
- 3) Your information is sent to Faith Livestock.** The auction will now be able to find you in their database and approve you to buy.
- 4) After you have pre-registered, please call Faith Livestock, 605/ 967-2200 to confirm that you are approved for bidding.**

REFERENCE SIRES



CHURCHILL SENSATION 028X

Calved: January 14, 2010

AHA#: 43092364

CL 1 DOMINO 9126J

HH ADVANCE 767G

UPS DOMINO 3027

CL 1 DOMINETTE 490

#42426386

UPS MISS DIAMOND 1353

SH DIAMOND 881

UPS MS MILEHIGH 8330

GH RAMBO 279R

GH NEON 17N

CHURCHILL LADY 7202T

HR GOLD DOMINO 251E

#42856776

CL 1 DOMINETTE 301N

CL 1 DOMINO 9126J

CL 1 DOMINETTE 8184H

EPDS	CED	BW	WW	YW	MILK	M&G	SC	FAT	REA	MB
	14.4★	-2.5★	49	67	49★	74★	1.7★	.075	.52★	.35★
	.76	.94	.91	.91	.83	.82	.60	.56	.57	

★ TRAIT LEADER

All EPDS current on December 1, 2018!



AGA 20J STANMORE 21M

Calved: February 12, 2002

AHA#: 42755505

AGA 4016D STANMORE 121G

CTY K STANMORE 4016D

AGA 121G STANMORE 20J

AGA 99B CENTENNIAL 51D

#42319233

AGA 40E MISS STANMORE 80G

AGA 9012 STANMORE 40E

AGA 16B MS GENERATOR 20E

XTC 15Z ENERLAD STAN 5C

XTC ENERLAD SELKIRK 15Z

AGA 5C MISS ENERLAD 68K

XTC 37Y STAN LASS 82A

#42755502

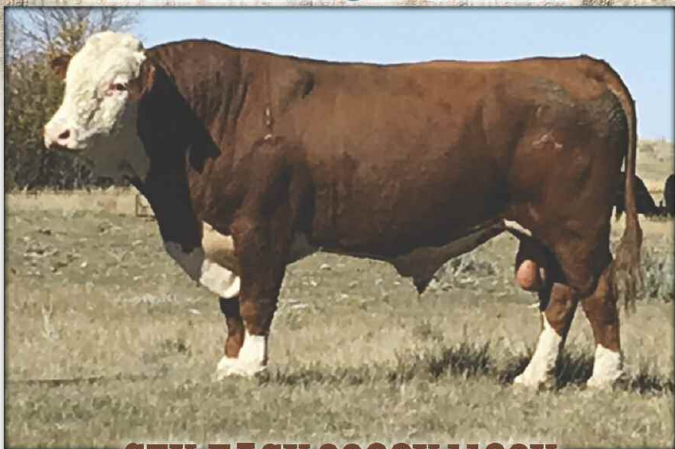
AGA 154F MS BRITISHER 159H

AGA 37B BRITISHER 154F

AGA 22B BRIGADER 83F

EPDS	CED	BW	WW	YW	MILK	M&G	SC	FAT	REA	MB
	5.3★	2.1	50	73	32★	57★	1.0	.015	-.24	.30★
	.55	.82	.75	.75	.61	.49	.39	.29	.32	

REFERENCE SIRES



CTY EASY 8803Y 1128Y

Calved: April 4, 2011

AHA#: 43247653

CTY EASY 8803U

#42908092

AGA 10S STAND 137Y

COURTNEY LASS 56M S6282

LBH 20J STANMORE 56M

COURTNEY LASS 56M W927

#43054232

COURTNEY LASS M227

SJSL HI 20 S LAD 10S
GU MISS 46E BRIT 10K
LBH 20J STANMORE 56M
COURTNEY LASS 10L P4282

AGA 121G STANMORE 20J
AGA 5C MISS ENERLAD 95K
FE 135D BRTSHR DOMINO 142F
COURTNEY LASS H827

E P S	CED	BW	WW	YW	MILK	M&G	SC	FAT	REA	MB
	8.8	1.3	52	69	9	35	1.3	.025	.19	.26
	.31	.65	.51	.47	.26	.32	.16	.10	.14	

CTY LAD 1115Y

Calved: March 29, 2011

AHA#: 43247663

AGA 72R LAD 49U

#P43072361

KGA 33H LAD 72R

AGA 656 MS STNDRD ET 85M

AGA 10S STAND 137Y

COURTNEY LASS 137Y W900

#43054171

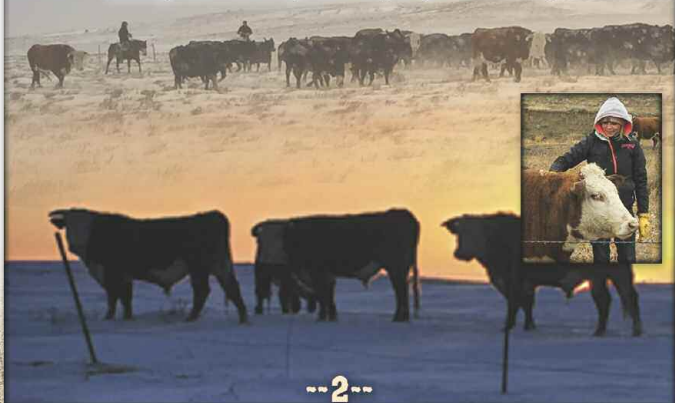
COURTNEY LASS 01K P4290

F-R 8020 LAD 33H
KGA 33H STNDRD LASS 76K
STANDARD LAD 656
AGA 22B MS BRIGADER 511E

SJSL HI 20 S LAD 10S
GU MISS 46E BRIT 10K
CTY BONANZA 01K
COURTNEY LASS M290

E P S	CED	BW	WW	YW	MILK	M&G	SC	FAT	REA	MB
	9.1	-0.5	36	54	23	41	1.3	-.025	.19	.11
	.28	.58	.45	.41	.16	.29	.14	.07	.11	

Hereford genetics maximize the value of your herd by leveraging traits such as fertility, feed efficiency, docility and feedlot profitability to your advantage.



SALE BULLS



701

Calved: March 15, 2017

BW **64** / WW **552** / YW **916**

CHURCHILL SENSATION 028X

#43092364

UPS DOMINO 3027
CHURCHILL LADY 7202T

CL 1 DOMINO 9126J
UPS MISS DIAMOND 1353
GH RAMBO 279R
CL 1 DOMINETTE 301N

MISS KLS MONTANA 1346

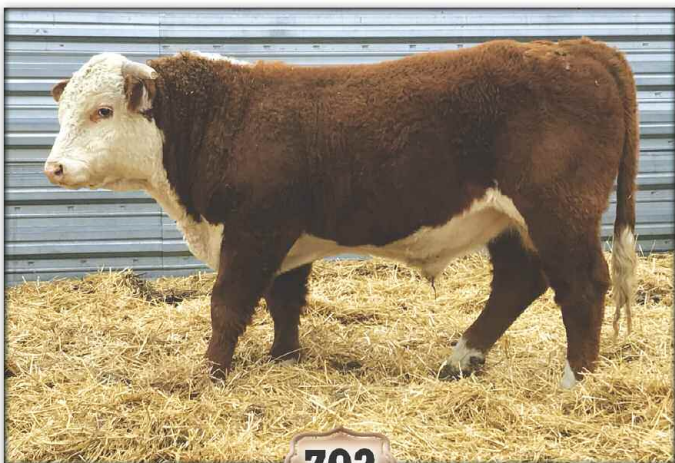
#43452520

CTY MONTANA 047X
MISS KLS RIBSTONE 1108

CTY MONTANA 6633S
COURTNEY LASS 9919J S691
KLS STANMORE 0935
MISS KLS STANMORE 0915

EPDS		CED	BW	WW	YW	MILK	M&G
	SIRE...	14.4★	-2.5★	49	67	49★	74★
DAM...	5.7	2.0	42	56	19	39	

★ TRAIT LEADER



702

Calved: March 9, 2017

BW **64** / WW **522** / YW **898**

AGA 20J STANMORE 21M

#42755505

AGA 121G STANMORE 20J
AGA 5C MISS ENERLAD 68K

AGA 4016D STANMORE 121G
AGA 40E MS STANMORE 80G
XTC 15Z ENERLAD STAN 5C
AGA 154F MS BRTSHR 159H

ELSHERE MONTANA 406

#43679327

CTY MONTANA 047X
MS KLS RED STRD SUNS 1012

CTY MONTANA 6633S
COURTNEY LASS 9919J S691
CTY RED STANMORE 6617S
MS KLS EXTRA SUNSHINE 0303

EPDS		CED	BW	WW	YW	MILK	M&G
	SIRE...	5.3★	2.1	50	73	32★	57★
DAM...	4.8	2.2	41	60	17	38	



703

Calved: March 8, 2017

BW **65** / WW **558** / YW **954**

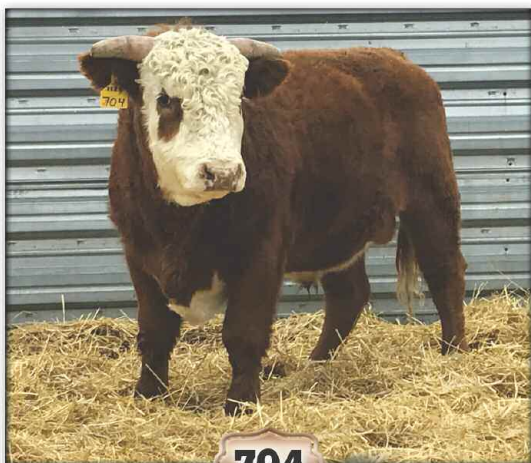
CTY EASY 8803U
CTY EASY 8803U 1128Y
 #43247653 COURTNEY LASS 56M W927

AGA 10S STAND 137Y
 COURTNEY LASS 56M S6282
 LBH 20J STANMORE 56M
 COURTNEY LASS M227

CL 1 DOMINO 0130X
SR LS SCOPIA 530C
 #43613993 LS VICKY 251Z

CL 1 DOMINO 860U
 CL 1 DOMINETTE 440P
 TH 122 71I VICTOR 719T
 LS BOWETTE 535

E P D S		CED	BW	WW	YW	MILK	M&G
	SIRE...	8.8	1.3	52	69	9	35
DAM...	5.0	0.8	48	68	31	55	



704

Calved: March 8, 2017

BW **65** / WW **524** / YW **874**

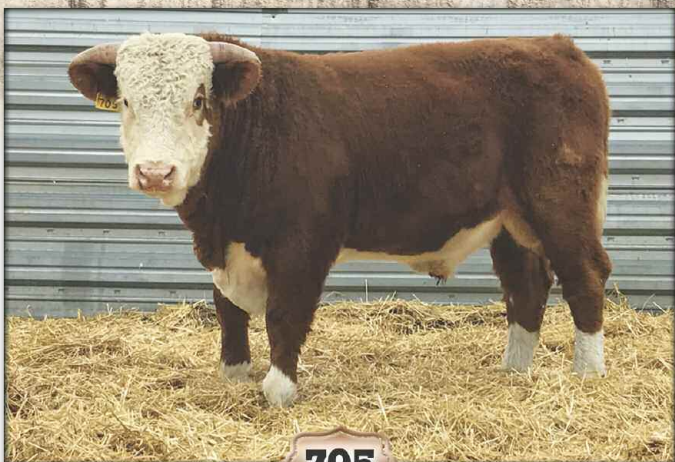
CTY EASY 8803U
CTY EASY 8803U 1128Y
 #43247653 COURTNEY LASS 56M W927

AGA 10S STAND 137Y
 COURTNEY LASS 56M S6282
 LBH 20J STANMORE 56M
 COURTNEY LASS M227

CHURCHILL SENSATION 028X
ELSHERE INDITION 554
 #43746905 SR INDITA 158Y

UPS DOMINO 3027
 CHURCHILL LADY 7202T
 UPS INDIGO 8648
 SR MONITA 625

E P D S		CED	BW	WW	YW	MILK	M&G
	SIRE...	8.8	1.3	52	69	9	35
DAM...	14.8	-3.1	33	48	34	50	



705

Calved: March 2, 2017

BW 68 / WW 514 / YW 918

CTY EASY 8803U

AGA 10S STAND 137Y

CTY EASY 8803U 1128Y

COURTNEY LASS 56M S6282

#43247653

COURTNEY LASS 56M W927

LBH 20J STANMORE 56M

COURTNEY LASS M227

CHURCHILL SENSATION 028X

UPS DOMINO 3027

ELSHERE MOSENS 550

CHURCHILL LADY 7202T

#43746903

MISS KLS MONTANA 1313

CTY MONTANA 047X

MISS KLS RED STRD 15L 1002

EPDS		CED	BW	WW	YW	MILK	M&G
	SIRE...	8.8	1.3	52	69	9	35
DAM...	14.8	-2.8	34	47	30	47	



706

Calved: March 15, 2017

BW 70 / WW 564 / YW 874

CTY EASY 8803U

AGA 10S STAND 137Y

CTY EASY 8803U 1128Y

COURTNEY LASS 56M S6282

#43247653

COURTNEY LASS 56M W927

LBH 20J STANMORE 56M

COURTNEY LASS M227

CHURCHILL SENSATION 028X

UPS DOMINO 3027

HULM BARITA 521

CHURCHILL LADY 7202T

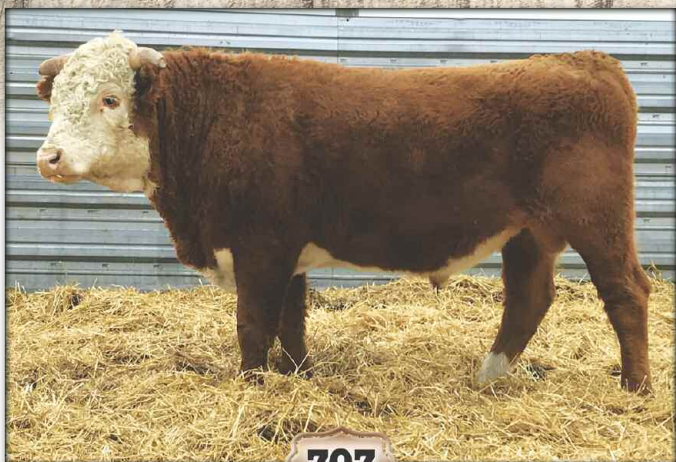
#43746842

SR BARITA 299Z

GH ADAMS TOP GUN ET 516T

SR DELIGHT 634

EPDS		CED	BW	WW	YW	MILK	M&G
	SIRE...	8.8	1.3	52	69	9	35
DAM...	10.2	-0.4	44	66	38	60	



707

Calved: March 9, 2017

BW **70** / WW **562** / YW **880**

CTY EASY 8803U 1128Y

CTY EASY 8803U

AGA 10S STAND 137Y

COURTNEY LASS 56M S6282

#43247653

COURTNEY LASS 56M W927

LBH 20J STANMORE 56M

COURTNEY LASS M227

CHURCHILL SENSATION 028X

UPS DOMINO 3027

ELSHERE SENTANA 559

#43746906

MISS KLS MONTANA 1345

CHURCHILL LADY 7202T

CTY MONTANA 047X

MISS KLS BRITISHER 1021

EPDS		CED	BW	WW	YW	MILK	M&G
	SIRE...	8.8	1.3	52	69	9	35
DAM...	9.1	-0.1	45	62	35	58	



708

Calved: March 11, 2017

BW **70** / WW **510** / YW **982**

CHURCHILL SENSATION 028X

UPS DOMINO 3027

CL 1 DOMINO 9126J

UPS MISS DIAMOND 1353

#43092364

CHURCHILL LADY 7202T

GH RAMBO 279R

CL 1 DOMINETTE 301N

CTY EASY 8803U 1128Y

CTY EASY 8803U

ELSHERE EASY BARITA LUE 567

#43713845

SR BARITA 1030Y

COURTNEY LASS 56M W927

GH ADAMS TOP GUN ET 516T

SR HARLET 794

EPDS		CED	BW	WW	YW	MILK	M&G
	SIRE...	14.4★	-2.5★	49	67	49★	74★
DAM...	5.0	2.6	46	66	15	38	

★ TRAIT LEADER



709

Calved: March 15, 2017

BW **73** / WW **648** / YW **994**

CHURCHILL SENSATION 028X

UPS DOMINO 3027
CHURCHILL LADY 7202T

CL 1 DOMINO 9126J
UPS MISS DIAMOND 1353
GH RAMBO 279R
CL 1 DOMINETTE 301N

#43092364

HULM LADY 423

CTY LAD 1115Y
SR INDITA 232Z

AGA 72R LAD 49U
COURTNEY LASS 137Y W900
UPS INDIGO 8648
SR ROSA 304

#43751978

E P D S		CED	BW	WW	YW	MILK	M&G
	SIRE...	14.4★	-2.5★	49	67	49★	74★
DAM...	8.7	-0.3	33	49	22	39	

★ TRAIT LEADER



712

Calved: March 4, 2017

BW **73** / WW **626** / YW **992**

CHURCHILL SENSATION 028X

UPS DOMINO 3027
CHURCHILL LADY 7202T

CL 1 DOMINO 9126J
UPS MISS DIAMOND 1353
GH RAMBO 279R
CL 1 DOMINETTE 301N

#43092364

MISS KLS MONTANA 1313

CTY MONTANA 047X
MISS KLS RED STRD 15L 1002

CTY MONTANA 6633S
COURTNEY LASS 9919J S691
CTY RED STANMORE 6617S
MISS KLS BRITISHER 15L 0608

#43452500

E P D S		CED	BW	WW	YW	MILK	M&G
	SIRE...	14.4★	-2.5★	49	67	49★	74★
DAM...	8.3	0.6	34	48	15	32	



714

Calved: March 9, 2017

BW 75 / WW 602 / YW 978

AGA 20J STANMORE 21M

AGA 121G STANMORE 20J

AGA 4016D STANMORE 121G

AGA 40E MS STANMORE 80G

#42755505

AGA 5C MISS ENERLAD 68K

XTC 15Z ENERLAD STAN 5C

AGA 154F MS BRTSHR 159H

CTY MONTANA 047X

CTY MONTANA 6633S

MISS KLS MONTANA 1343

#43452513

MISS KLS BRITISHER 1034

COURTNEY LASS 9919J S691

CTY BIG BRITISHER 789T

MS KLS BRTSHR EXTRA 0829

E P D S		CED	BW	WW	YW	MILK	M&G
	SIRE...	5.3★	2.1	50	73	32★	57★
DAM...	7.7	1.7	38	53	18	37	

★ TRAIT LEADER



716

Calved: March 7, 2017

BW 77 / WW 650 / YW 904

CHURCHILL SENSATION 028X

UPS DOMINO 3027

CL 1 DOMINO 9126J

UPS MISS DIAMOND 1353

#43092364

CHURCHILL LADY 7202T

GH RAMBO 279R

CL 1 DOMINETTE 301N

HH ADVANCE 0132X

CL 1 DOMINO 7128T

SR FORTIA 523C

#43613475

SR HARLET 857

HH MISS ADVANCE 6054S

CJH HARLAND 408

SR ANDREA 160

E P D S		CED	BW	WW	YW	MILK	M&G
	SIRE...	14.4★	-2.5★	49	67	49★	74★
DAM...	3.4	2.9	48	72	28	52	



718

Calved: March 8, 2017

BW **78** / WW **610** / YW **960**

CHURCHILL SENSATION 028X

#43092364

UPS DOMINO 3027
CHURCHILL LADY 7202T

CL 1 DOMINO 9126J
UPS MISS DIAMOND 1353
GH RAMBO 279R
CL 1 DOMINETTE 301N

MISS KLS MONTANA 1316

#43452525

CTY MONTANA 047X
MS KLS RED STANDARD 1122

CTY MONTANA 6633S
COURTNEY LASS 9919J S691
CTY RED STANMORE 6617S
MISS KLS BRITISHER 15L 0604

EPDS		CED	BW	WW	YW	MILK	M&G
	SIRE...	14.4★	-2.5★	49	67	49★	74★
DAM...	3.3	2.4	44	62	20	42	

★ TRAIT LEADER



720

Calved: March 12, 2017

BW **79** / WW **516** / YW **984**

CHURCHILL SENSATION 028X

#43092364

UPS DOMINO 3027
CHURCHILL LADY 7202T

CL 1 DOMINO 9126J
UPS MISS DIAMOND 1353
GH RAMBO 279R
CL 1 DOMINETTE 301N

MISS KLS MONEY 1325

#43452492

CTY MONEY 9905W
MISS KLS BRTSHR VOLT 0834

CTY MONEY 7711T
COURTNEY LASS 3337N T7536
KLS BRITISHER 15L 0540
MISS KLS EXTRA 032

EPDS		CED	BW	WW	YW	MILK	M&G
	SIRE...	14.4★	-2.5★	49	67	49★	74★
DAM...	-0.4	5.6	43	79	15	37	



721

Calved: March 6, 2017

BW **79** / WW **698** / YW **1035**

CHURCHILL SENSATION 028X

#43092364

UPS DOMINO 3027
CHURCHILL LADY 7202T

CL 1 DOMINO 9126J
UPS MISS DIAMOND 1353
GH RAMBO 279R
CL 1 DOMINETTE 301N

SR BRITANY 231Z

#43310403

CTY BRITISHER 7721T
SR SABRINA 983

CTY BRITISHER 107L
COURTNEY LASS 45J R524
OXH SABRE 7299
SR RESA 766

EPDS		CED	BW	WW	YW	MILK	M&G
	SIRE...	14.4★	-2.5★	49	67	49★	74★
DAM...	4.7	2.5	31	62	23	38	

★ TRAIT LEADER



723

Calved: March 12, 2017

BW **82** / WW **502** / YW **844**

CTY EASY 8803U 1128Y

#43247653

CTY EASY 8803U
COURTNEY LASS 56M W927

AGA 10S STAND 137Y
COURTNEY LASS 56M S6282
LBH 20J STANMORE 56M
COURTNEY LASS M227

MISS KLS MONTANA 1317

#43452502

CTY MONTANA 047X
MISS KLS SUNSHINE 1007

CTY MONTANA 6633S
COURTNEY LASS 9919J S691
CTY SUNSHINE 810H
MS KLS BRITISHER 15L 0835

EPDS		CED	BW	WW	YW	MILK	M&G
	SIRE...	8.8	1.3	52	69	9	35
DAM...	8.6	1.0	41	61	19	39	



725

Calved: April 17, 2017

BW **82** / WW **538** / YW **908**

CTY LAD 1115Y

#43247663

AGA 72R LAD 49U

COURTNEY LASS 137Y W900

CTY RED STANMORE 6617S

MISS KLS RED STANDARD 1106

#43242328

MISS KLS BRITISHER 0520

KGA 33H LAD 72R

AGA 656 MS STANDARD 85M

AGA 10S STAND 137Y

COURTNEY LASS 01K P4290

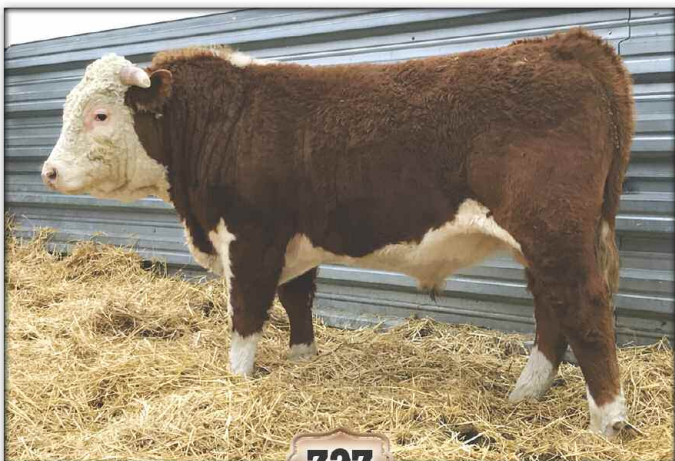
LBH 20J STANMORE 56M

COURTNEY LASS 236J P445

CTY BRITISHER 15L

MISS KLS EXTRA 273

EPDS		CED	BW	WW	YW	MILK	M&G
	SIRE...	9.1	-0.5	36	54	23	41
DAM...	-0.2	6.1	52	83	15	41	



727

Calved: March 6, 2017

BW **83** / WW **588** / YW **956**

CHURCHILL SENSATION 028X

#43092364

UPS DOMINO 3027

CHURCHILL LADY 7202T

CTY BRITISHER 7721T

SR BRITANY 2132Z

#43310523

SR HARLET 738

CL 1 DOMINO 9126J

UPS MISS DIAMOND 1353

GH RAMBO 279R

CL 1 DOMINETTE 301N

CTY BRITISHER 107L

COURTNEY LASS 45J R524

CJH HARLAND 408

SR ROBYN 348

EPDS		CED	BW	WW	YW	MILK	M&G
	SIRE...	14.4★	-2.5★	49	67	49★	74★
DAM...	0.7	6.2	52	95	23	49	



728

Calved: March 11, 2017

BW **84** / WW **690** / YW **1084**

CHURCHILL SENSATION 028X

#43092364

UPS DOMINO 3027
CHURCHILL LADY 7202T

CL 1 DOMINO 9126J
UPS MISS DIAMOND 1353
GH RAMBO 279R
CL 1 DOMINETTE 301N

SR INDITA 158Y

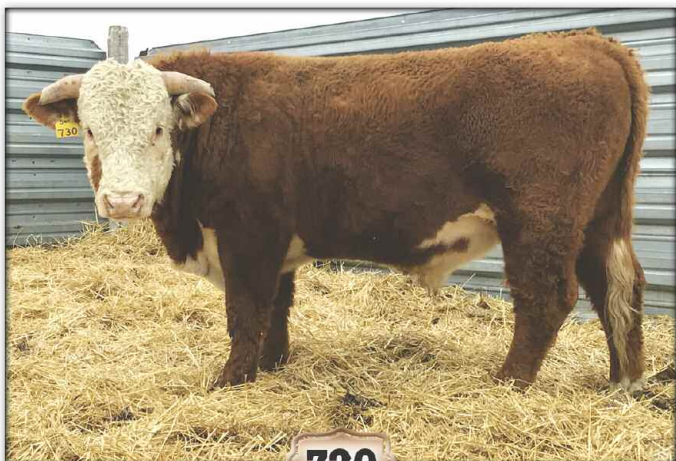
#43210027

UPS INDIGO 8648
SR MONITA 625

UPS DOMINO 5216
UPS MISS NEON 6529
MH DAKOTA 3146
SR SHANA 268

E P D S		CED	BW	WW	YW	MILK	M&G
	SIRE...	14.4★	-2.5★	49	67	49★	74★
DAM...	8.8	0.0	30	49	21	36	

★ TRAIT LEADER



730

Calved: March 10, 2017

BW **84** / WW **770** / YW **1150**

CHURCHILL SENSATION 028X

#43092364

UPS DOMINO 3027
CHURCHILL LADY 7202T

CL 1 DOMINO 9126J
UPS MISS DIAMOND 1353
GH RAMBO 279R
CL 1 DOMINETTE 301N

SR BRITANY 224Z

#43310419

CTY BRITISHER 7721T
SR INSIGHT 362

CTY BRITISHER 107L
COURTNEY LASS 45J R524
SR INSIGHT 129
ORE 2013 MISS 7080

E P D S		CED	BW	WW	YW	MILK	M&G
	SIRE...	14.4★	-2.5★	49	67	49★	74★
DAM...	-4.0	6.2	48	87	28	52	



731

Calved: March 10, 2017

BW 87 / WW 602 / YW 930

CHURCHILL SENSATION 028X

#43092364

UPS DOMINO 3027
CHURCHILL LADY 7202T

CL 1 DOMINO 9126J
UPS MISS DIAMOND 1353
GH RAMBO 279R
CL 1 DOMINETTE 301N

SR BENITA 5127C

#43613200

BRC FACTOR Y19
SR ROSA 360

F 157K RIBSTONE 763
BRC MISS KAHLUA 205
CTY BONANZA 01K
SR MANDY 608

E P D S		CED	BW	WW	YW	MILK	M&G
	SIRE...	14.4★	-2.5★	49	67	49★	74★
DAM...	-6.3	8.2	63	97	23	55	

★ TRAIT LEADER



732

Calved: April 25, 2017

BW 87 / WW 518 / YW 886

CTY LAD 1115Y

#43247663

AGA 72R LAD 49U
COURTNEY LASS 137Y W900

KGA 33H LAD 72R
AGA 656 MS STANDARD 85M
AGA 10S STAND 137Y
COURTNEY LASS 01K P4290

MISS KLS STANMORE 0938

#43050838

CTY RED STANMORE 6617S
MISS KLS 18A SUNSHINE 0105

LBH 20J STANMORE 56M
COURTNEY LASS 236J P445
CTY SUNSHINE 810H
MISS KLS EXTRA 194

E P D S		CED	BW	WW	YW	MILK	M&G
	SIRE...	9.1	-0.5	36	54	23	41
DAM...	0.4	4.0	42	70	20	41	



733

Calved: March 24, 2017

BW 88 / WW 542 / YW 938

CTY LAD 1115Y

#43247663

AGA 72R LAD 49U

COURTNEY LASS 137Y W900

CTY RED STANMORE 6617S

MISS KLS RED STANDARD SUNS 1012

#43155245

MISS KLS EXT SUNSHINE 0303

KGA 33H LAD 72R

AGA 656 MS STANDARD 85M

AGA 10S STAND 137Y

COURTNEY LASS 01K P4290

LBH 20J STANMORE 56M

COURTNEY LASS 236J P445

CTY SUNSHINE 810H

MISS KLS EXTRA 354

E P D S		CED	BW	WW	YW	MILK	M&G
	SIRE...	9.1	-0.5	36	54	23	41
DAM...	-2.7	5.7	43	78	16	37	



734

Calved: April 1, 2017

BW 88 / WW 540 / YW 914

CTY LAD 1115Y

#43247663

AGA 72R LAD 49U

COURTNEY LASS 137Y W900

CTY RIBSTONE 4414P

MISS KL RIBSTONE SUNSHINE 0715

#42855208

MS KLS SUNSHINE RUST 0334

KGA 33H LAD 72R

AGA 656 MS STANDARD 85M

AGA 10S STAND 137Y

COURTNEY LASS 01K P4290

FE 254E SUP RIBSTONE 10L

COURTNEY LASS M2075

CTY SUNSHINE 810H

MISS KLS EXTRA 273

E P D S		CED	BW	WW	YW	MILK	M&G
	SIRE...	9.1	-0.5	36	54	23	41
DAM...	0.7	3.9	37	61	11	30	



735

Calved: April 2, 2017

BW 88 / WW 504 / YW 900

CTY LAD 1115Y

#43247663

AGA 72R LAD 49U

COURTNEY LASS 137Y W900

CTY MONTANA 047X

MISS KLS MONTANA 1331

#43452505

MS KLS RED STRD SUNS 1012

KGA 33H LAD 72R

AGA 656 MS STANDARD 85M

AGA 10S STAND 137Y

COURTNEY LASS 01K P4290

CTY MONTANA 6633S

COURTNEY LASS 9919J S691

CTY RED STANMORE 6617S

MS KLS EXTRA SUNSHINE 0303

E P D S		CED	BW	WW	YW	MILK	M&G
	SIRE...	9.1	-0.5	36	54	23	41
DAM...	2.0	3.1	41	61	20	41	



736

Calved: April 8, 2017

BW 88 / WW 508 / YW 866

CTY LAD 1115Y

#43247663

AGA 72R LAD 49U

COURTNEY LASS 137Y W900

KLS BIG BRITISHER 1035

MISS KLS BRITISHER 1208

#43349760

MS KLS BRITISHER 15L 0835

KGA 33H LAD 72R

AGA 656 MS STANDARD 85M

AGA 10S STAND 137Y

COURTNEY LASS 01K P4290

CTY BIG BRITISHER 789T

MISS KLS RIBSTONE 18A 0732

KLS BRITISHER 15L 0540

MISS KLS 41F 001

E P D S		CED	BW	WW	YW	MILK	M&G
	SIRE...	9.1	-0.5	36	54	23	41
DAM...	4.1	3.7	43	68	13	35	



737

Calved: March 24, 2017

BW **90** / WW **546** / YW **836**

CTY EASY 8803U

AGA 10S STAND 137Y

CTY EASY 8803U 1128Y

COURTNEY LASS 56M S6282

#43247653

COURTNEY LASS 56M W927

LBH 20J STANMORE 56M

COURTNEY LASS M227

KLS RED STANDARD 1109

CTY RED STANMORE 6617S

MISS KLS MONEY 1318

MISS KLS 41F SUNSHINE 0224

#43461372

MISS KLS RIBSTONE 0735

CTY RIBSTONE 466P

MS KLS ARD SUNSHINE 0134

EPDS		CED	BW	WW	YW	MILK	M&G
	SIRE...	8.8	1.3	52	69	9	35
	DAM...	-8.6	7.8	50	75	21	46



738

Calved: March 11, 2017

BW **90** / WW **638** / YW **944**

CTY EASY 8803U

AGA 10S STAND 137Y

CTY EASY 8803U 1128Y

COURTNEY LASS 56M S6282

#43247653

COURTNEY LASS 56M W927

LBH 20J STANMORE 56M

COURTNEY LASS M227

CTY LAD 145Y

AGA 72R LAD 49U

HULM MISS 522

COURTNEY LASS K411 U8453

#43746668

MISS KLS MONEY 1303

CTY MONEY 9905W

MS KLS BRITISHER 15L 0604

EPDS		CED	BW	WW	YW	MILK	M&G
	SIRE...	8.8	1.3	52	69	9	35
	DAM...	-5.0	7.7	56	90	15	43



739

Calved: March 27, 2017

BW 90 / WW 640 / YW 916

CTY EASY 8803U 1128Y

CTY EASY 8803U

AGA 10S STAND 137Y

COURTNEY LASS 56M S6282

#43247653

COURTNEY LASS 56M W927

LBH 20J STANMORE 56M

COURTNEY LASS M227

HULM BRIT 224

CHURCHILL SENSATION 028X

UPS DOMINO 3027

#43746850

SR BRITANY 224Z

CHURCHILL LADY 7202T

CTY BRITISHER 7721T

SR INSIGHT 362

EPDS		CED	BW	WW	YW	MILK	M&G
	SIRE...	8.8	1.3	52	69	9	35
DAM...	6.5	1.2	47	75	39	62	



740

Calved: March 9, 2017

BW 90 / WW 586 / YW 934

AGA 20J STANMORE 21M

AGA 121G STANMORE 20J

AGA 4016D STANMORE 121G

AGA 40E MS STANMORE 80G

#42755505

AGA 5C MISS ENERLAD 68K

XTC 15Z ENERLAD STAN 5C

AGA 154F MS BRTSHR 159H

MISS KLS RED STANDARD 1103

CTY RED STANMORE 6617S

LBH 20J STANMORE 56M

#43242321

MISS KLS MONTANA 42B 0621

COURTNEY LASS 236J P445

CTY MONTANA 435P

MS KLS EXT SUNSHINE 0217

EPDS		CED	BW	WW	YW	MILK	M&G
	SIRE...	5.3*	2.1	50	73	32*	57*
DAM...	1.4	4.5	43	71	19	40	

* TRAIT LEADER



742

Calved: March 16, 2017

BW **93** / WW **570** / YW **1035**

AGA 20J STANMORE 21M

AGA 121G STANMORE 20J

AGA 4016D STANMORE 121G

AGA 40E MS STANMORE 80G

#42755505

AGA 5C MISS ENERLAD 68K

XTC 15Z ENERLAD STAN 5C

AGA 154F MS BRTSHR 159H

HEREFORD

HEREFORD

UNREGISTERED HEREFORD COW

HEREFORD

#

HEREFORD

HEREFORD

E P D S		CED	BW	WW	YW	MILK	M&G
	SIRE...	5.3★	2.1	50	73	32★	57★
DAM...	Not available						

★ TRAIT LEADER



743

Calved: March 15, 2017

BW **93** / WW **586** / YW **876**

CHURCHILL SENSATION 028X

UPS DOMINO 3027

CL 1 DOMINO 9126J

UPS MISS DIAMOND 1353

#43092364

CHURCHILL LADY 7202T

GH RAMBO 279R

CL 1 DOMINETTE 301N

BRC FACTOR Y19

F 157K RIBSTONE 763

SR BENITA 5139C

BRC MISS KAHLUA 205

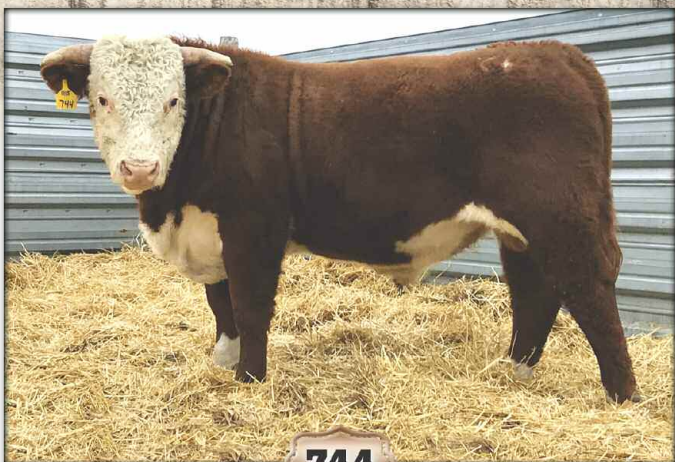
#43613205

SR VANCIA 382

CHURCHILL ADVANCE 109

SR SABRINA 184

E P D S		CED	BW	WW	YW	MILK	M&G
	SIRE...	14.4★	-2.5★	49	67	49★	74★
DAM...	0.2	4.1	48	78	25	49	



744

Calved: April 15, 2017

BW **94** / WW **504** / YW **954**

CTY LAD 1115Y

#43247663

AGA 72R LAD 49U

COURTNEY LASS 137Y W900

KGA 33H LAD 72R

AGA 656 MS STANDARD 85M

AGA 10S STAND 137Y

COURTNEY LASS 01K P4290

SR RAZIE 386A

#43421752

SR RENDITION 568

SR JULIE 127Y

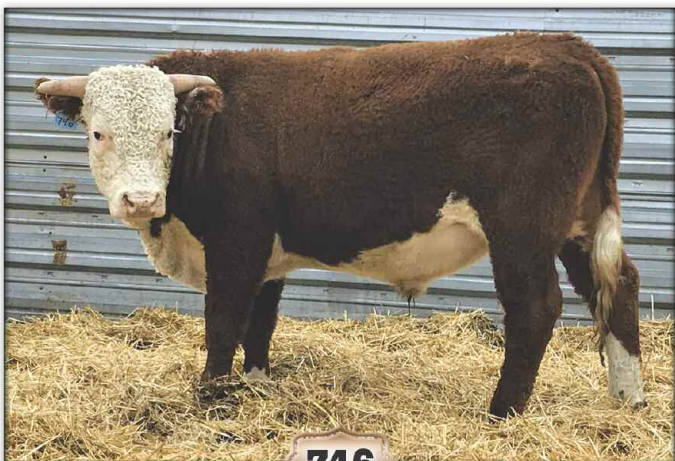
CHURCHILL YANKEE

SR PEGGY 075

PPF MARK DON 5398

SR ROSA 493

EPDS		CED	BW	WW	YW	MILK	M&G
	SIRE...	9.1	-0.5	36	54	23	41
DAM...	-3.2	3.3	41	73	26	46	



746

Calved: March 13, 2017

BW **96** / WW **500** / YW **808**

AGA 20J STANMORE 21M

#42755505

AGA 121G STANMORE 20J

AGA 5C MISS ENERLAD 68K

AGA 4016D STANMORE 121G

AGA 40E MS STANMORE 80G

XTC 15Z ENERLAD STAN 5C

AGA 154F MS BRTSHR 159H

MSS KLS RIBSTONE 0901

#43050881

KLS RIBSTONE 0603

MISS KLS RIBSTONE 0735

CTY RIBSTONE 33N

MS KLS BRITISHER 15L 0314

CTY RIBSTONE 466P

MS KLS ARD SUNSHINE 0134

EPDS		CED	BW	WW	YW	MILK	M&G
	SIRE...	5.3★	2.1	50	73	32★	57★
DAM...	-0.7	4.8	36	57	11	29	

★ TRAIT LEADER



747

Calved: March 11, 2017

BW 96 / WW 614 / YW 1095

AGA 20J STANMORE 21M

#42755505

AGA 121G STANMORE 20J

AGA 5C MISS ENERLAD 68K

AGA 4016D STANMORE 121G

AGA 40E MS STANMORE 80G

XTC 15Z ENERLAD STAN 5C

AGA 154F MS BRTSHR 159H

MISS KLS RED STANDARD 1107

#43242324

CTY RED STANMORE 6617S

MS KLS BRITISHER 15L 0608

LBH 20J STANMORE 56M

COURTNEY LASS 236J P445

CTY BRITISHER 15L

MISS KLS 41F 001

E P D S		CED	BW	WW	YW	MILK	M&G
	SIRE...	5.3★	2.1	50	73	32★	57★
DAM...	0.0	5.6	46	77	10	33	



749

Calved: March 27, 2017

BW 98 / WW 624 / YW 1035

CTY EASY 8803U 1128Y

#43247653

CTY EASY 8803U

COURTNEY LASS 56M W927

AGA 10S STAND 137Y

COURTNEY LASS 56M S6282

LBH 20J STANMORE 56M

COURTNEY LASS M227

MISS KLS MONTANA 1345

#43452511

CTY MONTANA 047X

MISS KLS BRITISHER 1021

CTY MONTANA 6633S

COURTNEY LASS 9919J S691

CTY BIG BRITISHER 789T

MISS KLS BONANZA 0501

E P D S		CED	BW	WW	YW	MILK	M&G
	SIRE...	8.8	1.3	52	69	9	35
DAM...	4.8	1.9	39	53	20	40	



THANKS...

Working with the Stuber Ranch has enabled us to build a solid genetic foundation for our breeding program. They have outstanding cattle with great bloodlines. The Stubers have been huge supporters of my rodeo career and have mentored my interest in the Hereford industry! — Cole

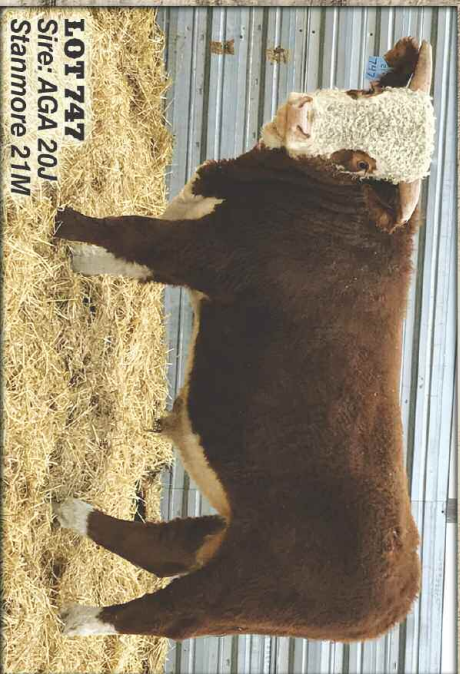
THE BALD-FACED TRUTH ABOUT HEREFORD GENETICS

It's obvious ... Hereford-sired calves deliver a \$51 increase in net profit per cow, per year. Hereford genetics bring legendary hybrid vigor, improved fertility, feed efficiency and easy-handling docility to your program. Read the research, see why Hereford heterosis pays off, at Hereford.org/genetics.



ELSHERE HEREFORDS

18974 Usta Rd.
Faith, South Dakota 57626



LOT 747
Sire: AGA 20J
Stanmore 21M

**TAKE ADVANTAGE OF HYBRID VIGOR BY
CAPITALIZING ON HEREFORD GENETICS!**

TO: